

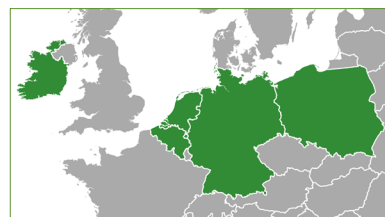
#### ABOUT THE PROJECT

**LOCATION** Belgium, Germany, Ireland, Netherlands, Poland

**BUDGET INFO** Total amount: 7.763.615 €  
EC Co-funding: 55%

**DURATION** 1/10/2021 - 30/09/2026

**PROJECT'S IMPLEMENTORS** Coordinating Beneficiary: Nature And Biodiversity Conservation Union - NABU  
Associated Beneficiaries: Natuurpunt, National University of Ireland, Natuurmonumenten, Eurosite, Klub Przyrodników, Ogólnopolskie Towarzystwo Ochrony Ptaków (OTOP)



#### PROJECT'S HIGHLIGHTS

- Restoration of agricultural peatlands - causing the most GHG emissions
- Engage with and demonstrate to policy-makers that the agricultural use of permanently wet peatlands is more climate-friendly and feasible
- EU-wide toolkit to catalogue peatland projects, policies and data



#### OBJECTIVES & SCOPE

- Restoration of degraded peatlands: improving hydrological situation (e.g. drainage ditches), removing trees and shrubs / Improving the state of habitats and relevant species
- Establish paludiculture solutions: feasibility studies in Belgium and Germany
- Develop an EU-wide toolkit to catalogue peatland projects, policies and data
- Assess the climate impact of the restoration measures by quantifying the GHG emissions



#### EXPECTED IMPACTS

- 689 ha of degraded peatlands restored
- Up to 50% reduction of Global Warming Potential on all sites (3600 t CO2-eq./yr)
- Strategies for paludiculture (also as buffer zones) in Germany and Belgium
- Improved communication and coordinated collaboration amongst EU peatland projects
- Recommendations for scaling up peatland restoration





#### POLICY IMPLICATIONS

---

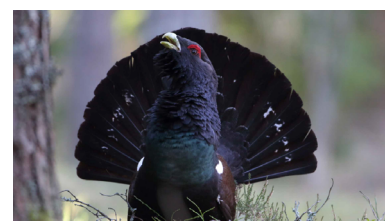
- Contribution to overall goals of the Paris agreement and key EU legislations
- Contributing to CCM
- Promoting sustainable use of natural resources through paludiculture
- Contributing to an EU-wide GHG monitoring standard
- Providing input to the development of peatland restoration plans (EU's Biodiversity Strategy and future EU Nature Restoration Plan)



#### CONTINUATION (REPLICATION, TRANSFER, MARKET UPTAKE)

---

- Knowledge and experience gained transferred and replicated within partners' extensive networks
- Permanent maintenance of the EU-wide Peatland Toolkit by Associate beneficiary
- Field excursions to present the best management practices
- Continued GHG monitoring
- Short films and project solutions permanently available digitally
- Continuation and replication of paludiculture practices through the adoption by land-users



#### PHOTO CREDITS (FROM TOP TO BOTTOM)

cover picture: Volker Gehrmann, map: NABU, photos: Raimo Pajula, Andreas Herrmann, Mara Pakalne, Countrypixel - stock.adobe.com, Aivars Petrins, Marc Scharping