

Commission White Paper on adapting to climate change

COM(2009) 147 final

- **the impact of climate change must also be factored into the management of Natura 2000 to ensure the diversity of and connectivity between natural areas and to allow for species migration and survival when climate conditions change.**

- **Draft guidelines on dealing with the impact of climate change on the management of Natura 2000 sites**

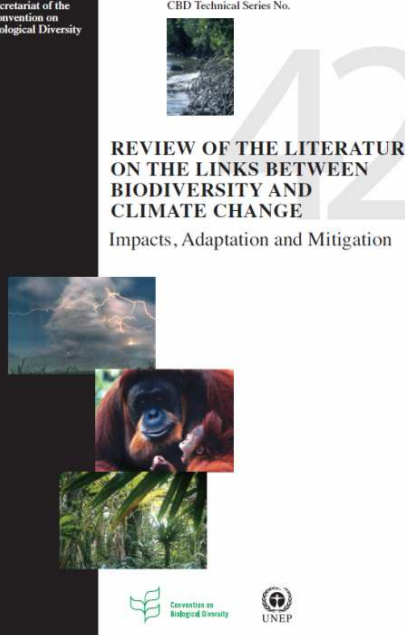


Direct impacts of climate change on biodiversity in Europe

Reviews in 2008 - 2009

Secretariat of the Convention on Biological Diversity

CBD Technical Series No. 42



REVIEW OF THE LITERATURE ON THE LINKS BETWEEN BIODIVERSITY AND CLIMATE CHANGE
Impacts, Adaptation and Mitigation

Convention on Biological Diversity
UNEP



T-PVS/Inf (2009) 10 rev

CONVENTION ON THE CONSERVATION OF EUROPEAN WILDLIFE AND NATURAL HABITATS


Standing Committee
29th meeting
Bern, 23-26 November 2009

PROTECTED AREAS AND CLIMATE CHANGE IN EUROPE

Report prepared by
Professor Miguel B. Araújo
National Museum of Natural Sciences, CSIC, Madrid, Spain &
'Rui Nabeiro' Biodiversity Chair, CIBIO, University of Evora, Portugal

With contributions by Ms. Raquel Garcia

This document will not be distributed at the meeting. Please bring this copy.
Ce document ne sera plus distribué en réunion. Prière de vous munir de cet exemplaire.





MACIS

Minimisation of and Adaptation to Climate change Impacts on biodiversiCity

Deliverable 1.1:
Climate change impacts on European biodiversity – observations and future projections


Specific targeted research project (STREP)
Contract period 01 November 2006 – 31 October 2008
Contract no. 044399 (SSPI) MACIS



Authors
Jürgen Olofsson, Thomas Hickler, Martin T. Sykes, Miguel B. Araújo, Emilio Baletto, Pam M. Berry, Simona Bonelli, Mar Cabeza, Anne Dubuis, Antoine Guisan, Ingolf Kühn, Heini Kujala, Jake Piper, Mark Rounsevell, Josef Settele and Wilfried Thuiller

and MACIS Co-ordination Team
April 2008
Project Website www.macis-project.net

1 MACIS D 1.1



Impacts of climate change and selected renewable energy infrastructures on EU biodiversity and the Natura 2000 network

Task 1 – Impacts of climate change on EU biodiversity: evidence and modelling results

This report was prepared by:
Nikki Hodgson, Eleanor Glen, Mike Harley, Maria Pooley, Todd Sajwaj, Roxi Schiopu (all AEA) and Yves de Soye (IUCN).

August 2009, updated version of October 2009

Climate change challenges for Natura 2000

- Natura 2000 sites provides critical “space for nature” in face of climate change
- need effective management & restoration systems to reduce non-climate pressures & increase resilience to climate change.
- Achieving conservation objectives for sites while recognising their dynamic nature will require developing appropriate responses to geographical shifts of species of conservation concern as their suitable climate space changes.
- There will be a need to ensure the efficacy of site monitoring to be able to distinguish between natural and climate change effects and failures of management.

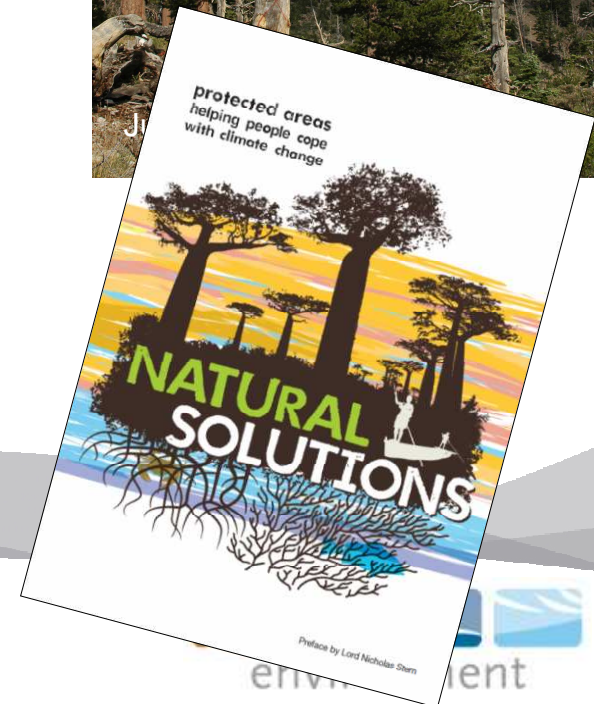
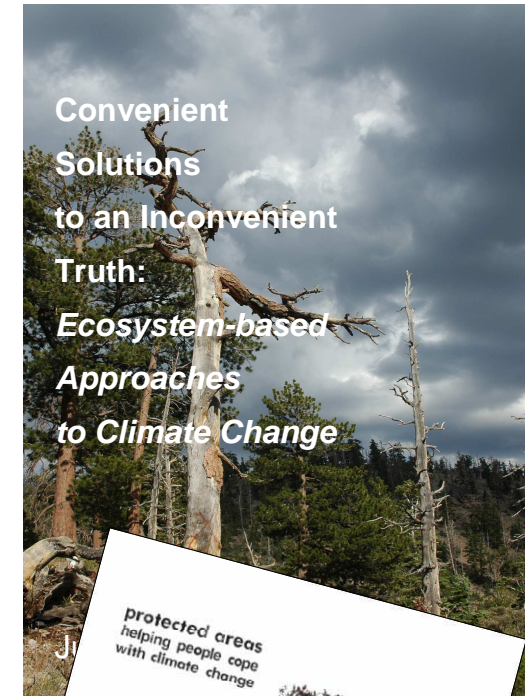
Strengthening the functional links between protected areas

- long term functioning and viability of EU protected area networks at stake if areas remain scattered and isolated
- Need to better integrated precious biodiversity-rich areas into the wider countryside
- Article 10 Habitats Directive
 - ➔ Connectivity/Fragmentation to be addressed further
 - ➔ identifies functional elements such as stepping stones, migration/dispersal corridors
 - ➔ Need better definition of elements of landscape permeability



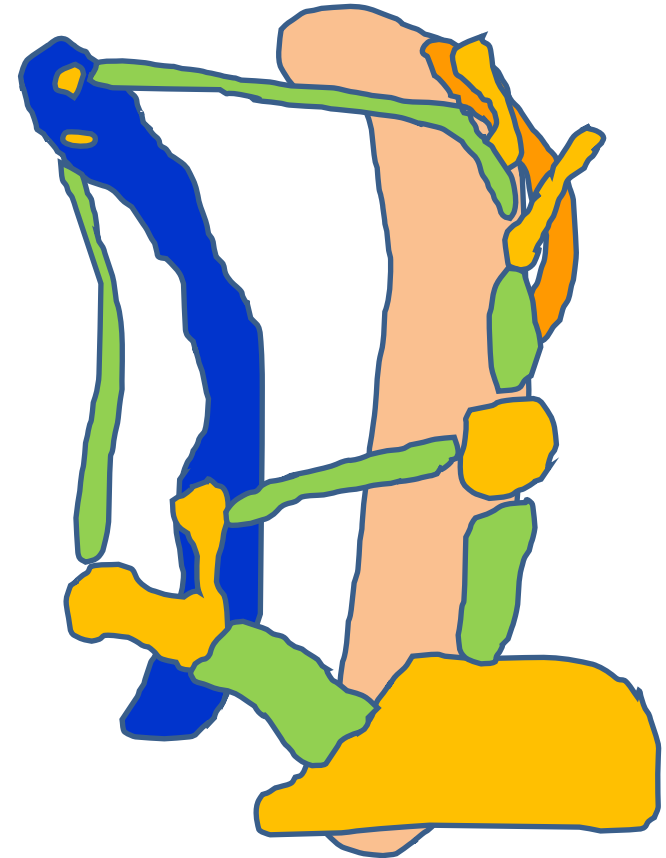
Protected areas and ecosystem services

- **Recognise and valorise 'ecosystem services' and benefits that derive from well managed protected areas such as**
 - ➔ flood conveyance of wetlands,
 - ➔ natural coastal protection of dune systems,
 - ➔ carbon sequestration of peatlands
 - ➔ ability of forested mountain areas to prevent erosion and land slides.
- **There will be an increased need to 'Work with nature' and apply natural ecosystem based solutions in the context of climate change adaptation**



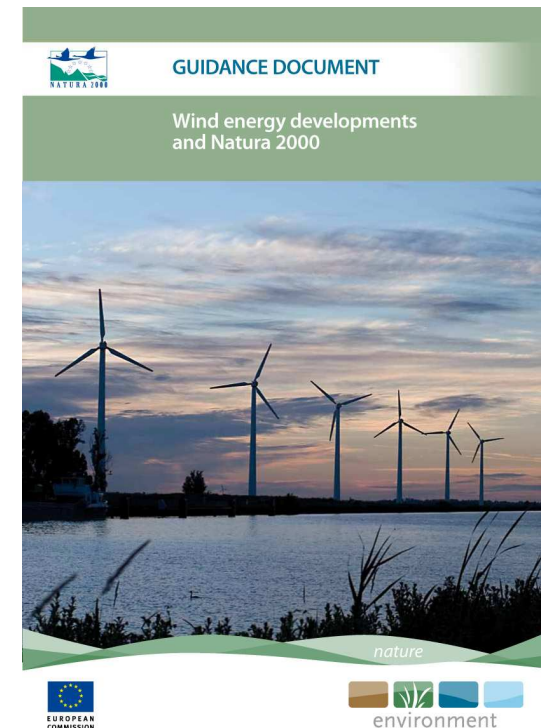
Development of new EU Green Infrastructure

- more connectivity
- a tool to integrate Natura 2000 into the wider landscape
- a functional system based on ecosystems and their services
- spatial planning to integrate different land use policies
- investments into GI (CC, biodiv, restoration,...)



Minimising the potential negative impacts of climate change mitigation measures on Natura 2000 area

- No a priori prohibition on activities in NATURA 200 areas – judged on case by case basis..... but risks from poorly planned developments
- New guidance provides policy/legal context for wind development, examine risks, provide strategic and project level guidance
- Key message will be the need for strategic spatial planning



Next Commission Steps

- to develop "guidelines on climate change and management of Natura 2000 as follow up to the 2009 Commission White Paper on "Adapting to Climate Change
- to propose an EU strategy on Green Infrastructure planned for 2011



For more information, please consult:

http://ec.europa.eu/environment/nature/index_en.htm

<http://ec.europa.eu/environment>

